

# Seven Storehouse Row

## Welcome to Storehouse Row

Here's an opportunity to place your firm at the center of the most revolutionary urban redevelopment project in the nation's history. Noisette is transforming North Charleston's old naval base and surrounding neighborhoods into a spirited community of forward-looking businesspeople, retailers, artisans, residents, and visitors.

At the hub of the Noisette redevelopment of the old naval base is Storehouse Row, a commercial aggregate of visionary firms that embrace the values and promise of sustainable urban life. As Number 7 and other buildings in this complex are readied for leasing, the streetscape on "The Row" will evolve into a lively complex of offices, shops, studios, open-air markets, and entrepreneurial businesses.

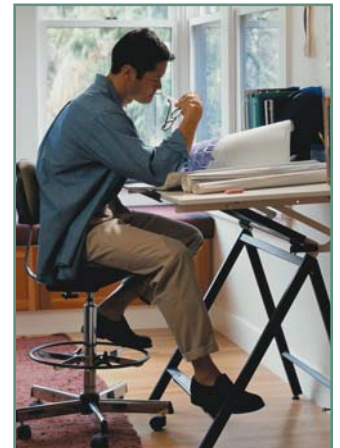


### *Lease a place in history*

Dating back to 1907, the handsome brick structure at Seven Storehouse Row is one of the first buildings completed on Charleston's naval base. Initially called Storehouse 7, it was used to trans-ship uncounted mountains of equipment and munitions that were off-loaded directly from boxcars at its west end rail dock. Space was gradually converted to offices that served for decades as the management hub of the Navy's local supply department, a group routing materials of all kinds throughout the base and its shipyard.

### *People Friendly*

Renovation guidelines ensure the space will be the healthiest, most productive environment possible. From specification of recyclable materials to the use of safe, low-VOC cleaning compounds, every aspect of construction and maintenance is designed to promote environmental sustainability within a productive, people-friendly atmosphere.

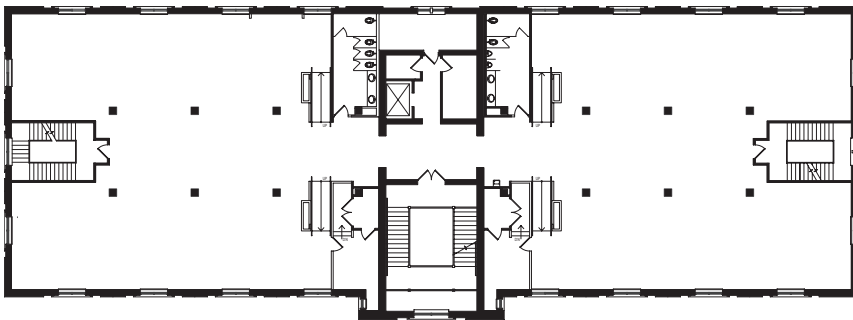
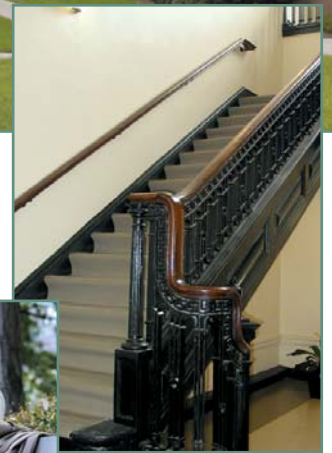


# Seven Storehouse Row

**MLS** 2314746 – CML – OFF

**Available** The spacious second floor features high ceilings, elegant foyer, and shady entryway garden. There's ample parking in adjacent lots, and the central location offers quick access from everywhere in the Lowcountry – downtown Charleston, East Cooper, the international airport, and West Ashley. The 11,400 square feet of space can be finished for single or multiple tenants.

**Directions** Follow McMillan Ave. to Noisette Blvd., turn north and the building is on your right. Or drive south on Virginia Avenue to Noisette Blvd., continue south to the building complex on your left.



For more information or an appointment, call John Tison  
Palmetto Commercial Properties  
Phone: (843) 577-2550 or E-mail: [john@btitelecom.net](mailto:john@btitelecom.net)